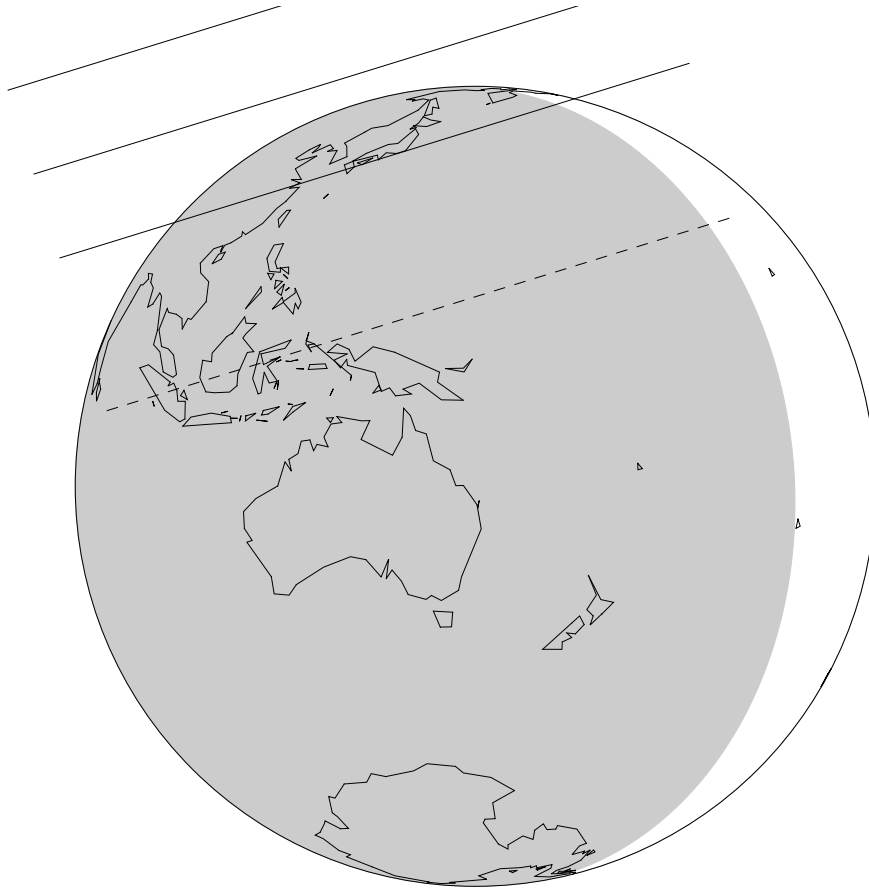


P20220622

Prediction



Lines: Black solid: Pluto. Black dashed: 1-sigma error
Displayed radius of 1400 km.

Site	Closest Approach Distance (km)	Closest Approach MidTime (UT)	Velocity (km/s)	Field Altitude (degrees; at mid-time)	Sun Elevation (degrees)
Osaka	1347 S.	15:46:55	21.5	31	-31
Tokyo	1367 S.	15:46:36	21.5	30	-29

S. = South of the center-line

About 25% Moon about 90 degrees away during the occultation.

Magnitudes:

Pluto

V mag: 14.5

Occultation Star:

DR2 ID#: Gaia EDR3 6864095820553269248

RA: 20 00 45.5024

DEC: -22 40 11.2424

DR2 G mag: 16.678

DR2 bp mag: 17.143

DR2 rp mag: 16.035

NOMAD:

B: 17.370

V: 16.560

R: 16.030

J: 15.269

H: 14.763

K: 14.648

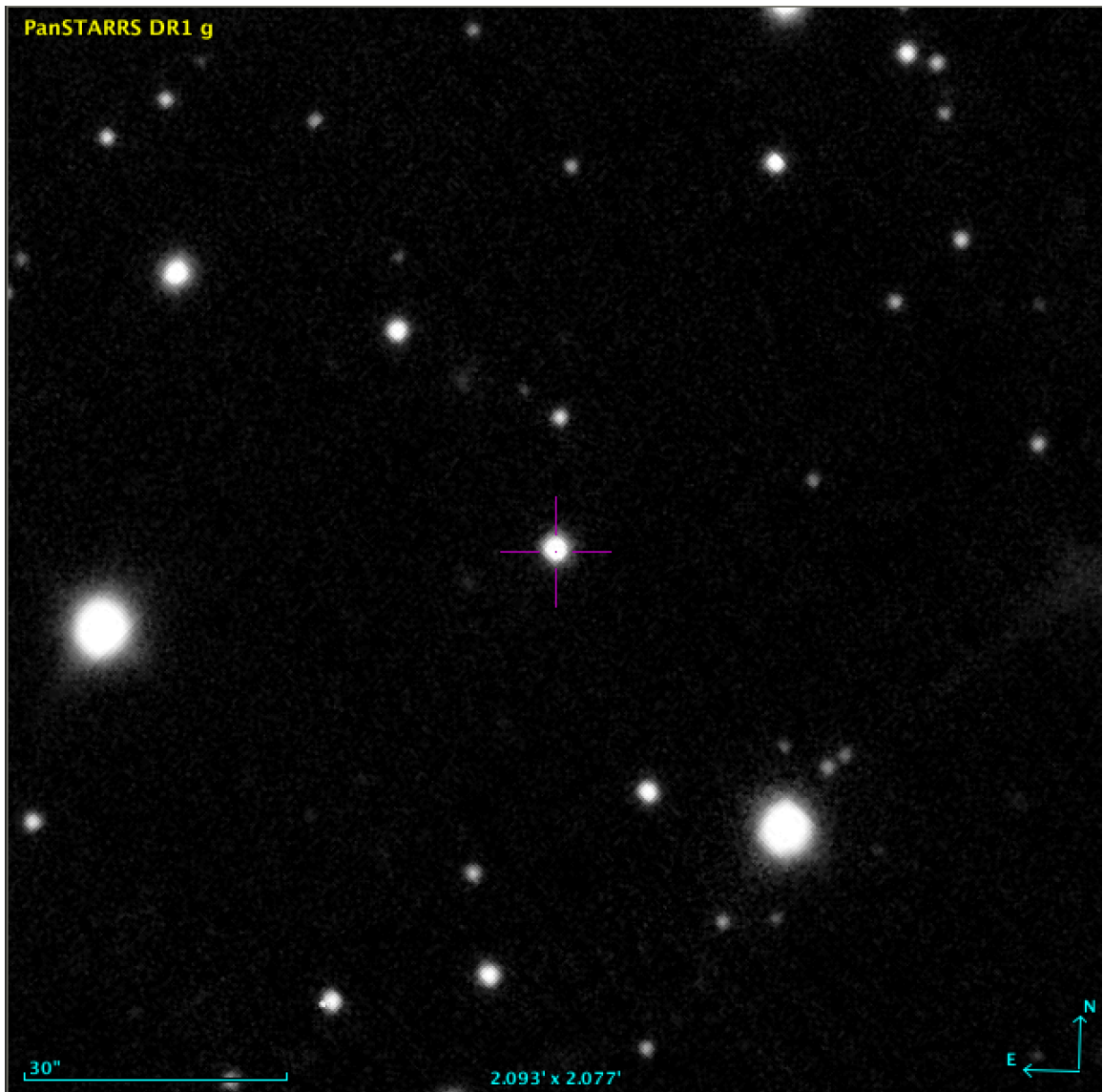
Finder Charts:

Field oriented North Up, East Left.
Pluto will be moving East (right to left).
Occultation is star in center with purple cross-hair.

1x1 arcmin

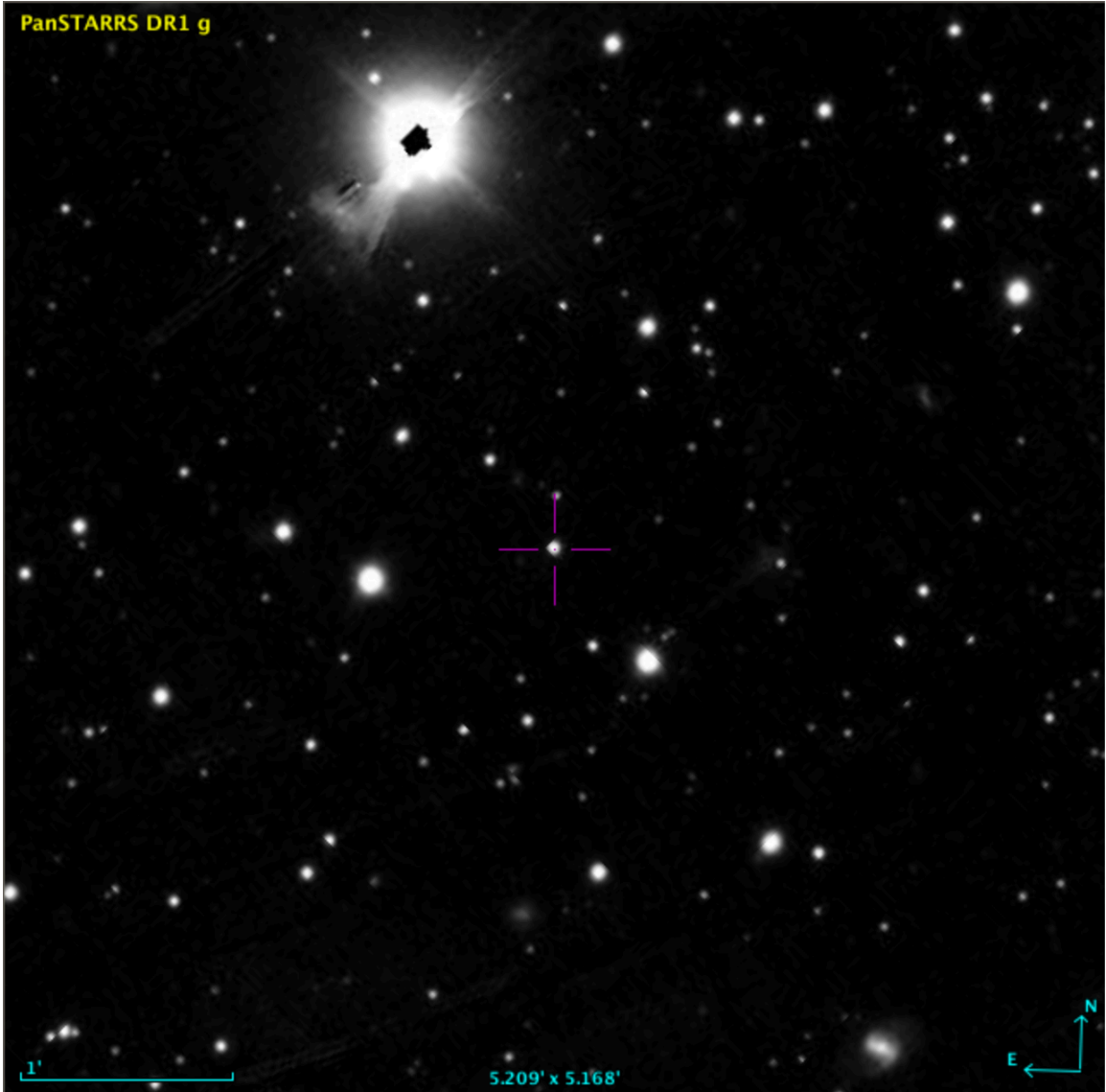


2x2 arcmin



5x5 arcmin

PanSTARRS DR1 g



10x10 arcmin

